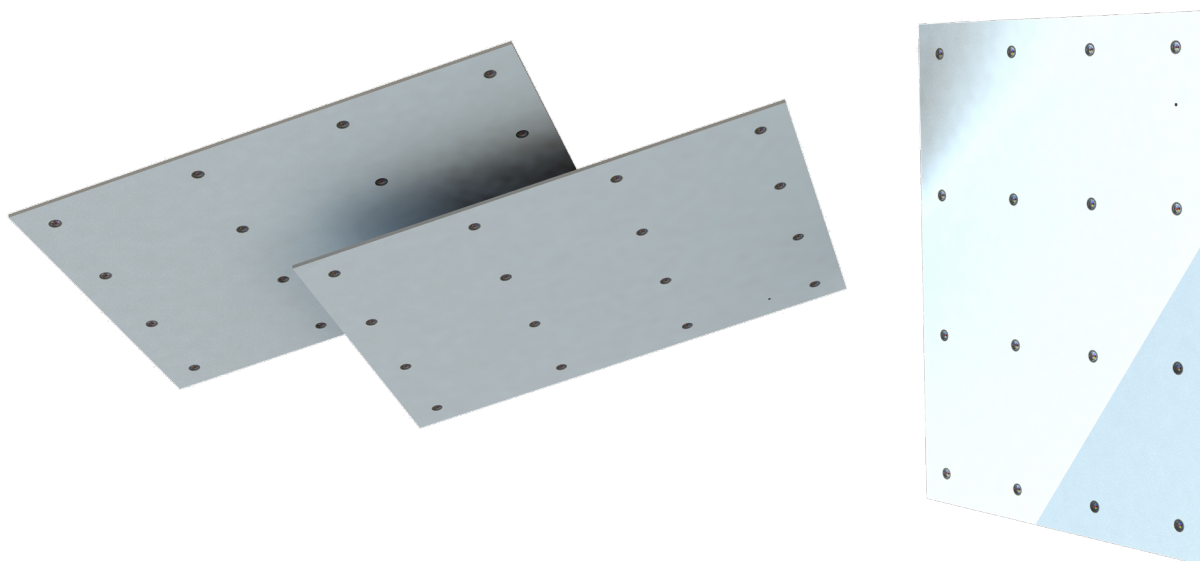
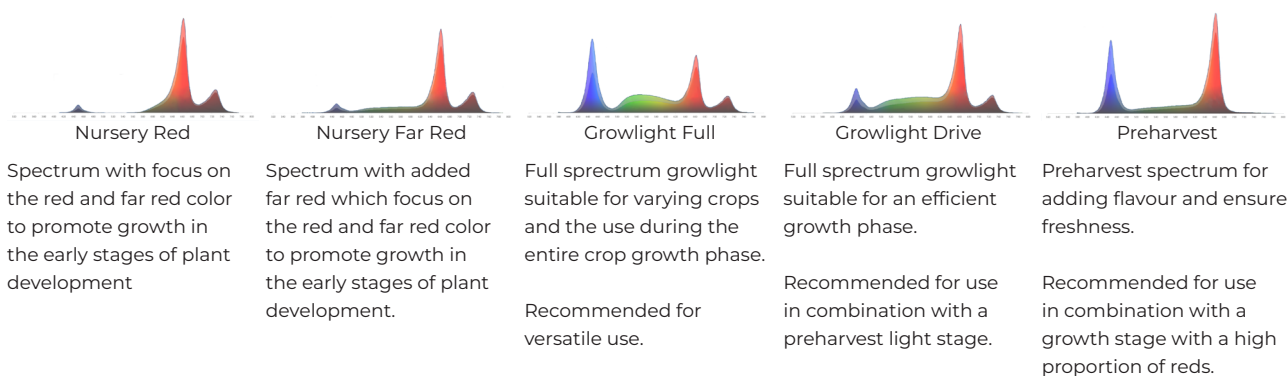


Gracy is an innovative lighting solution that can be cut into any shape and size. It is both available for indoor and outdoor use, with a market-leading lifespan, The lightweight aluminum panel is only 6mm slim and enable multiple applications.



Spectra



Applications



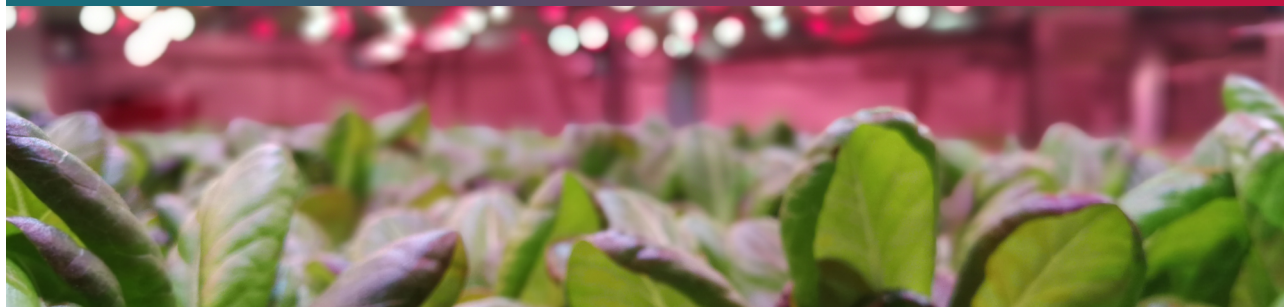
Nurseries



Vertical farms

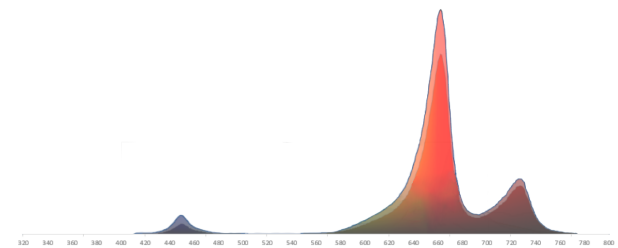


Indoor farms



Spectra

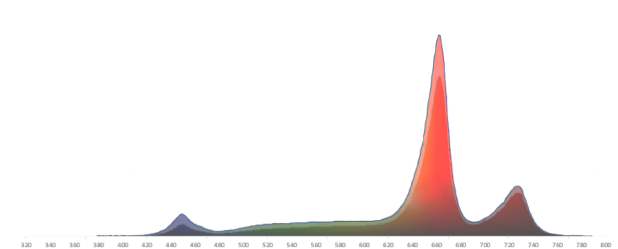
Nursery Red



UV	Blue	Green	Red	Far red
-	440-460 nm	(Broad)	650-670 nm	720-740 nm
0 %	3 %	11 %	75 %	11 %

LED panel type	Light output [μmol/s]	Efficacy [μmol/J]
LOW	106	3.01
MID	132	3.01
HIGH	165	3.01

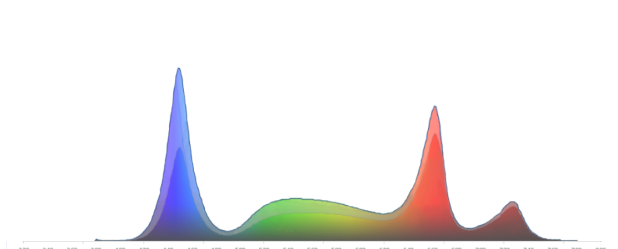
Nursery Far Red



UV	Blue	Green	Red	Far red
-	440-460 nm	(Broad)	650-670 nm	720-740 nm
0 %	6 %	12 %	64 %	19 %

LED panel type	Light output [μmol/s]	Efficacy [μmol/J]
LOW	106	3.21
MID	132	3.21
HIGH	165	3.21

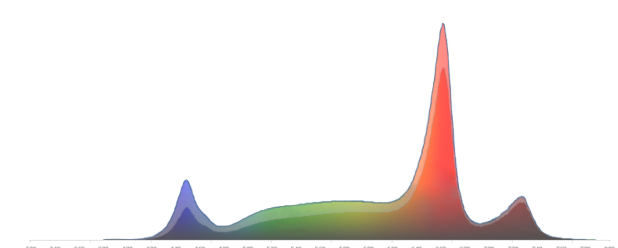
Growlight Full



UV	Blue	Green	Red	Far red
-	440-460 nm	(Broad)	650-670 nm	720-740 nm
0 %	27 %	24 %	37 %	11 %

LED panel type	Light output [μmol/s]	Efficacy [μmol/J]
LOW	106	3.08
MID	132	3.08
HIGH	165	3.08

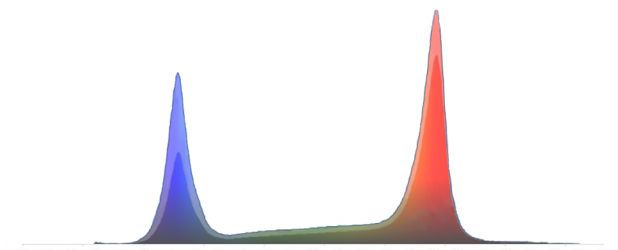
Growlight Drive



UV	Blue	Green	Red	Far red
-	440-460 nm	(Broad)	650-670 nm	720-740 nm
0 %	11 %	22 %	56 %	11 %

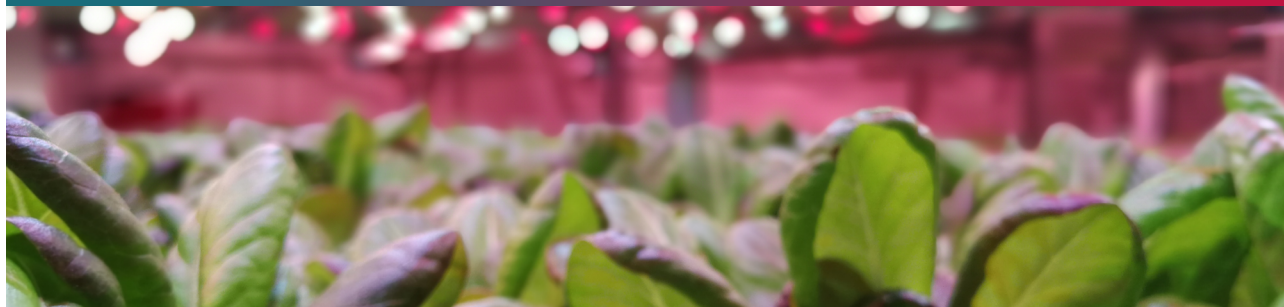
LED panel type	Light output [μmol/s]	Efficacy [μmol/J]
LOW	128	3.13
MID	160	3.13
HIGH	200	3.13

Preharvest

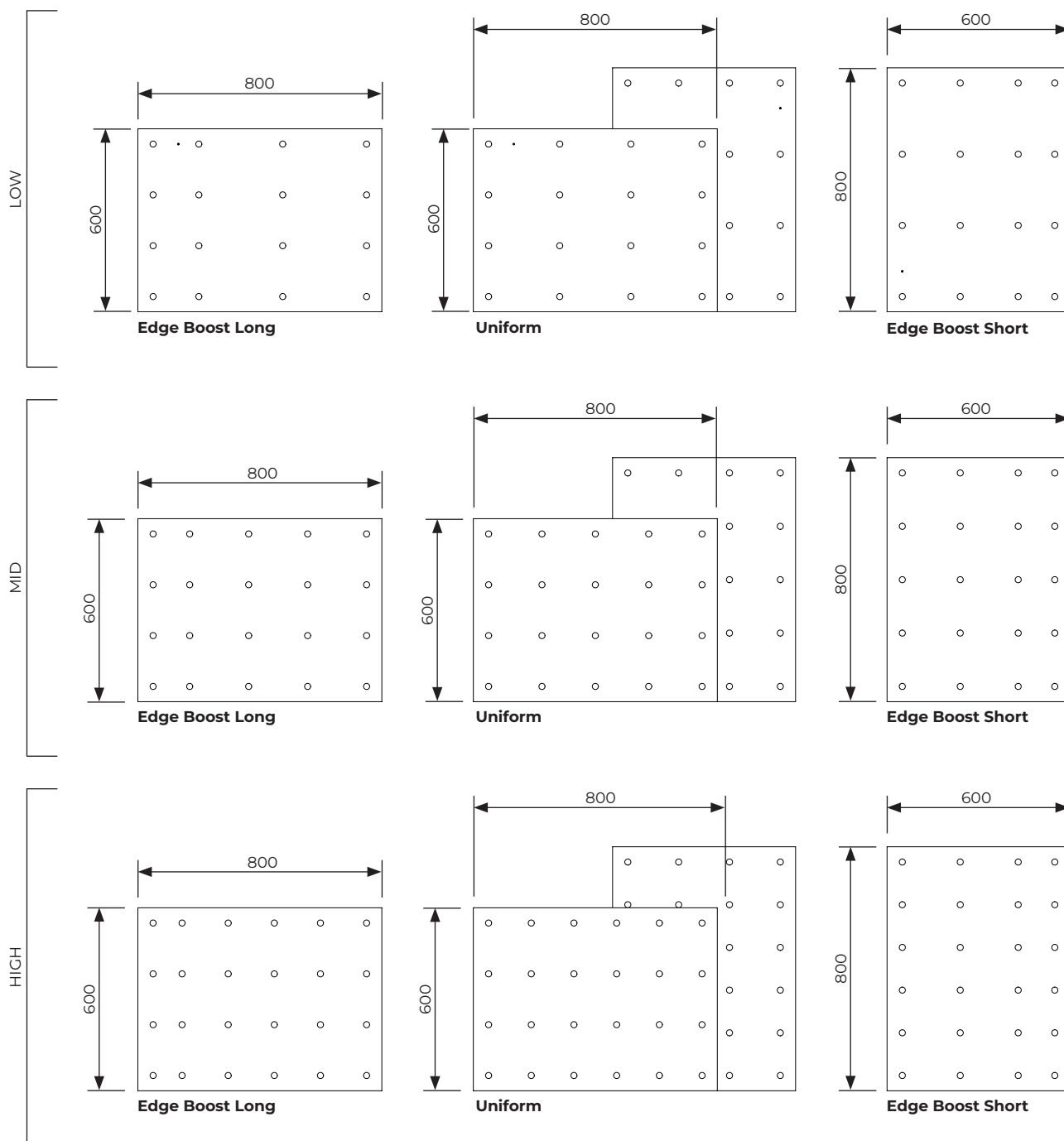


UV	Blue	Green	Red	Far red
-	440-460 nm	(Broad)	650-670 nm	720-740 nm
0 %	26 %	11 %	61 %	2 %

LED panel type	Light output [μmol/s]	Efficacy [μmol/J]
LOW	128	3.08
MID	160	3.08
HIGH	200	3.08



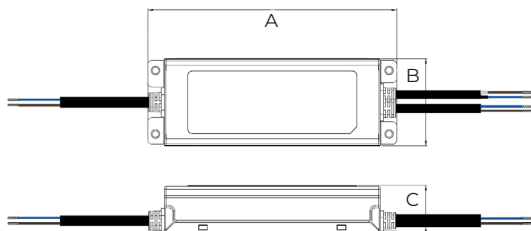
LED Panel Options





Power Supply Options

Power Supply	Number of LED panels	LED panel type	Dimming type	Length [A]	Width [B]	Height [C]	Weight
PSU 65-2	2	LOW	DALI	180 mm	63 mm	35.5 mm	0.67 kg
PSU 80-2		MID		199 mm	63 mm	35.5 mm	0.76 kg
PSU 115-2		HIGH		219 mm	63 mm	35.5 mm	0.86 kg
PSU 100-3	3	LOW		219 mm	63 mm	35.5 mm	0.86 kg
PSU 125-3		MID		244 mm	71 mm	37.5 mm	1.11 kg
PSU 170-3		HIGH		244 mm	71 mm	37.5 mm	1.11 kg



Specifications

System

General

Mounting height above canopy	> 150 mm
Number of LED panels per system	2 - 3

Electrical

Voltage range	220-240 VAC
Frequency	50 / 60 Hz
Power consumption	72-189 W
Power factor	≥ 0.95
Dimming	DALI (8-100%)

Lifetime

Max ambient temperature	25 °C
System lifetime	> 50,000 hrs

Safety & Conformity

Marking	CE
Electrical shock protection	Class I
Ingress protection	IP65
RoHS compliant	Yes
REACH complaint	Yes

LED Panels

LOW

Light output PPF*	106 - 128 µmol/s
Efficacy*	3.01 - 3.21 µmol/J
Power consumption	32 W
Light distribution	120°
Lifetime LED spots (Q90)	> 50,000 hrs
IP rating	IP65

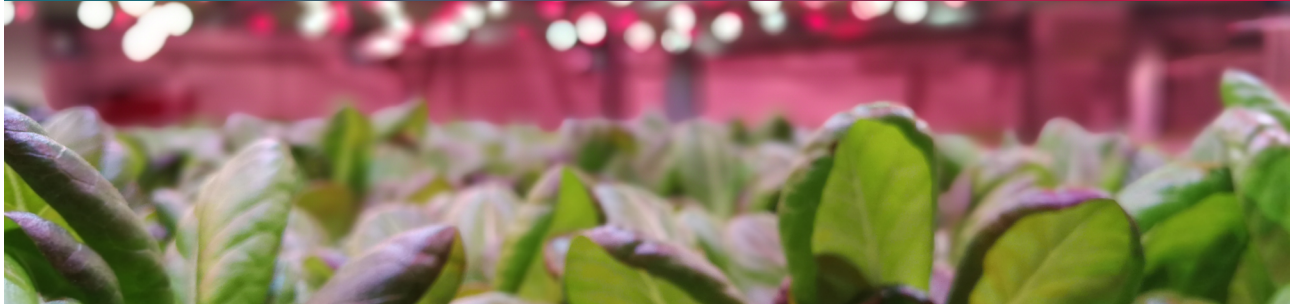
MID

Light output PPF*	132 - 160 µmol/s
Efficacy*	3.01 - 3.21 µmol/s/W
Power consumption	42 W
Light distribution	120°
Lifetime LED spots (Q90)	> 50,000 hrs
IP rating	IP65

HIGH

Light output PPF*	165 - 200 µmol/s
Efficacy*	3.01 - 3.21 µmol/s/W
Power consumption	56 W
Light distribution	120°
Lifetime LED spots (Q90)	> 50,000 hrs
IP rating	IP65

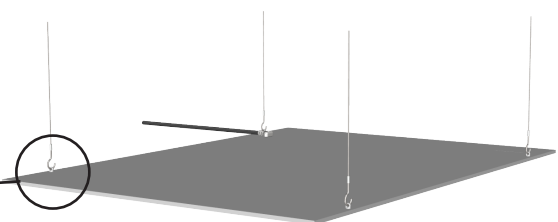
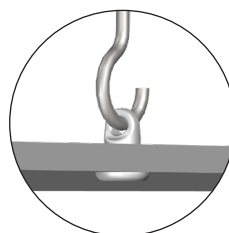
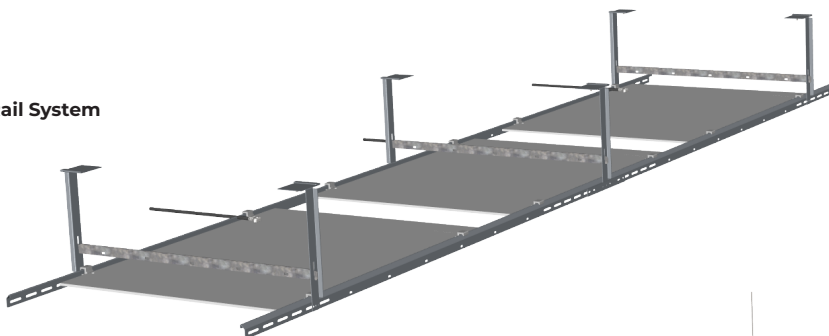
* See page 2 for specific performance values by spectrum



Mounting System Options

Product Description	Product Image	Dimensions	Note
Rail system option 1		[L x W x H] 3000 x 665 x 260 mm	Can hold up to 3 LED panels
Rail system option 2		[L x W x H] 1500 x 665 x 260 mm	Can hold up to 2 LED panels
		D ₁ = 8 mm d ₁ = 4 mm H = 16 mm	4 pcs. for each LED panel
Wire system		L1 = 250 mm L2 = 500 mm L3 = Customizable	4 pcs. for each LED panel
		L1 = 1000 mm L2 = Customizable	4 pcs. for each LED panel

Rail System



Wire System