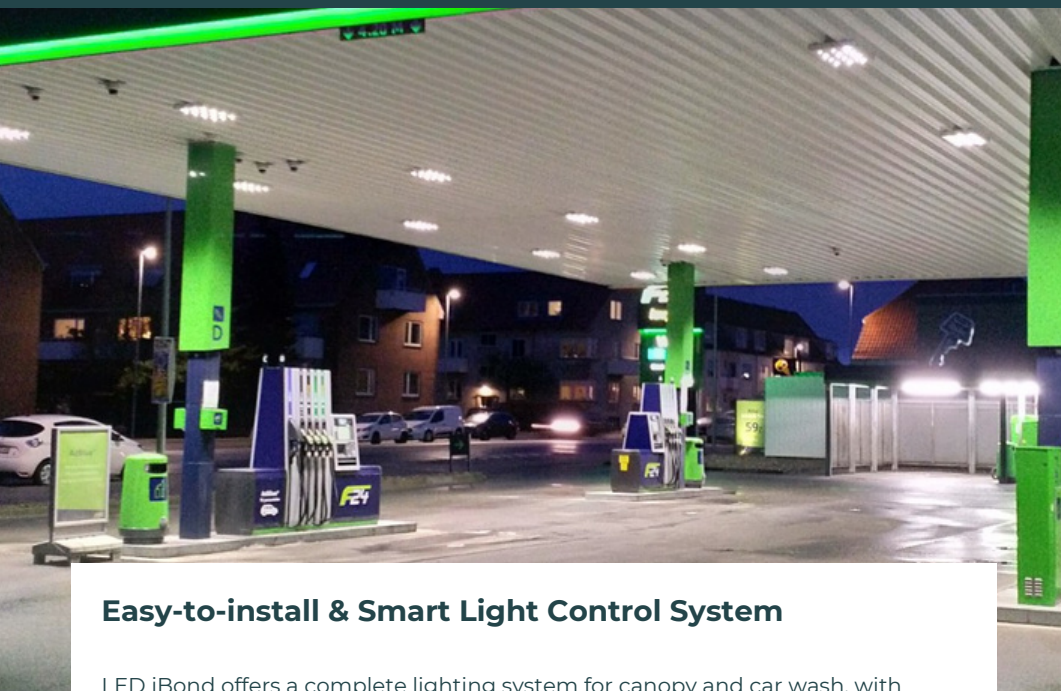
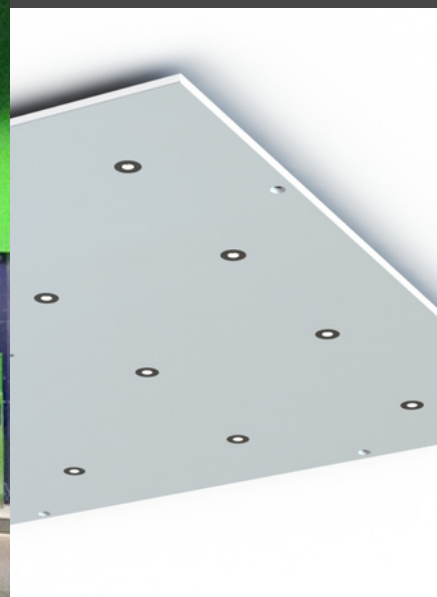


# Retrofit panels with Lighting Control Solution for Canopies and Car Wash



## PRODUCT SHEET



### Easy-to-install & Smart Light Control System

LED iBond offers a complete lighting system for canopy and car wash, with optional smart lighting scenarios with motion and daylight sensors.

#### Customized Light panels for perfect retrofit

The slim 8-11 mm GRACY LED-panels are available in many shapes and sizes for 1:1 retrofit to cover or re-use existing frame.

The light panels are weather, water and dust resistant. The aluminum panels and glass-protected LEDs are designed for rough environments where light, safety and durability are essential.

Market leading product lifespan. High quality solution which is designed and manufactured in Denmark.

#### Easy installation with Master box

LED iBond's light panel system is a self contained plug and play solution. The solution is build on one or more easy-to-install Master boxes with control electronics connecting all components to one single solution.


#### Optimizing energy efficiency

Smart sensors and the light control system can help you increase energy savings and extend the life of your lighting installation. This can also reduce maintenance costs and the overall CO2-emissions.

#### Fields of application:

Service Station Canopies and Car Washes.

## Key Features

- Retrofit - matches any service station or car wash design
- Easy-to-install Master box
- Smart Motion sensors
  - IR or Microwave
  - Built-in or external
- Strong light of up to 15.000 Lumen and up to 6500K
- IP67 rated with sealed glass front for maximum protection
- Resistant against high-pressure cleaning
- Standard sizes:
  - 560×360x8 mm
  - 560×260x8 mm
  - 750x750x11 mm
- Recyclable materials 

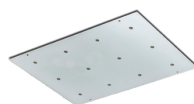
# Product specifications

## GRACY Industry RGS light panels



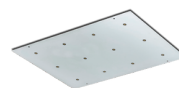
**RGS LL 750x750-12**

51425.01



**RGS LL 560x360-12**

51272.10



**RGS GL 560x260-12**

51246.11

Field of application	Canopy		Car Wash
Dimensions	750 x 750 x 8 mm	560 x 360 x 8 mm	560 x 260 x 11 mm
Power consumption - incl. driver	40 W		
Luminous flux	5900 lm		
Efficacy	148 lm/W		
Supply Voltage	100-240VAC		
Color temperature	4000K		
Color Rendering Index (CRI)	70+		
No. of LED	12		
Light Control	Yes		
Driver	DALI 55W		
Ingress Protection	IP65		IP67
Front protection	Polycarbonate (LL)		Glass (GL)
Weight (panel)	5,9 kg	2,0 kg	2,9 kg

## Easy connection and Installation

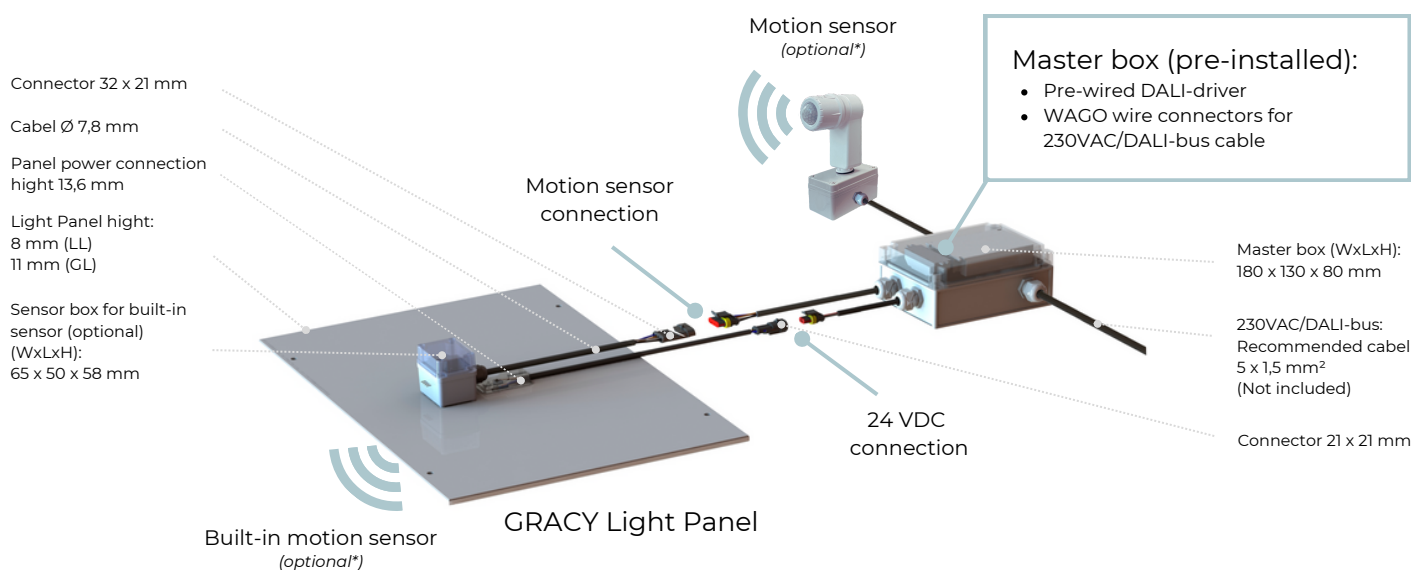
The easy-to-install Master box contains pre-wired DALI-driver and WAGO wire connector, for easy connection of the 230VAC/DALI-bus cable. When the Master box is connected to power grid, the GRACY Light Panel connects with the 24VDC click-connection cable and then mounted through rubber-sealed screw holes.

### Light Management ready

Smart sensors and light control system is an optional feature for the GRACY Light Panels. The sensors can be built into the GRACY LED-panel and be connected to the Master box directly via quick cable connectors, or the sensors can be installed separately and connected via 230V/DALI-bus cables. Programming of individual sensor-controlled lights is possible onsite with an infrared remote control or remotely with LED iBond's advanced Light Control System software.



*IR-Remote  
Programming  
Control*



*\*See LED iBond Light Management Solution*