

Lighting solution for Service Stations and Car Wash

Easy installation and high efficiency for low climate impact.



PRODUCT SHEET

6mm Retrofit Panels & Easy-to-install

GRACY Industry LED lighting panel

The light panels are IP67, weather or chemical resistant. The encapsulated panels and glass-protected LEDs are designed for rough environments where light, safety and durability are essential.

Market leading product lifespan. High quality solution which is designed and manufactured in Denmark.

Easy system installation

LED iBond's light panel system is a plug and play solution for direct installation onto canopy or car wash ceiling and connected to the pre-wired PSU Box via waterproof connectors plugs.

PSU box with Build-in Emergency Light

The easy-to-install PSU box contains pre-wired DALI-driver and WAGO wire connector, for easy connection of the 230VAC/DALI-bus cable.

The optional build-in Emergency Light with battery back-up, will still function for 3 hours in the event of a power failure.

Optimizing energy efficiency

Smart sensors and the light control system can help you increase energy savings and extend the life of your lighting installation. This can also reduce maintenance costs and the overall CO2-emissions.

Key Features

Simple installation

Powerful self-contained plug-and-play solution that can be easily installed

Energy savings

Lighting control systems can reduce energy consumption by up to 80% and reduce climate impact

Increased safety

Providing the desired amount of light where and when it is needed increase safety

Upgradability

The systems are upgradeable and can be customized to meet the specific requirements of a building or space

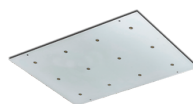
Recyclable materials 

Product specifications

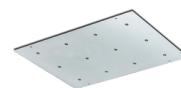
GRACY Industry LED lighting panel



SQR 750x750-12 IP67



RGS 560x360-12 IP67



RGS 560x260-12 IP67-CR

Field of application	Canopy		Car Wash
Dimensions	750 x 750 x 6 mm	560 x 360 x 6 mm	560 x 260 x 11 mm
Power consumption - incl. driver	40 W		
Luminous flux	5900 lm		
Efficacy	148 lm/W		
Supply Voltage	100-240VAC		
Color temperature	4000K		
Color Rendering Index (CRI)	70+		
No. of LED	12		
Light Control	Yes		
Ingress Protection	IP67		IP67 Chemical Resistant
Front protection	Glass protected LED		Glass Encapsulated Panel
Weight (panel)	5,9 kg	2,0 kg	2,9 kg

Easy installation and Light Management ready

The GRACY LED-panel are easily mounted directly onto the canopy or car wash cieling. There are no need for mounting plates or cutting roofholes.

Smart sensors and light control system is an optional feature. Programming of individual sensor-controlled lights is possible onsite with a remote control.

The light panels has IP67 glass protected LEDs to be water and weather resistant. The panels for car wash are glass encapsulated to resist harsh chemicals and high pressure cleaning. All cables are UV- and water resistant.

Connection & Components

