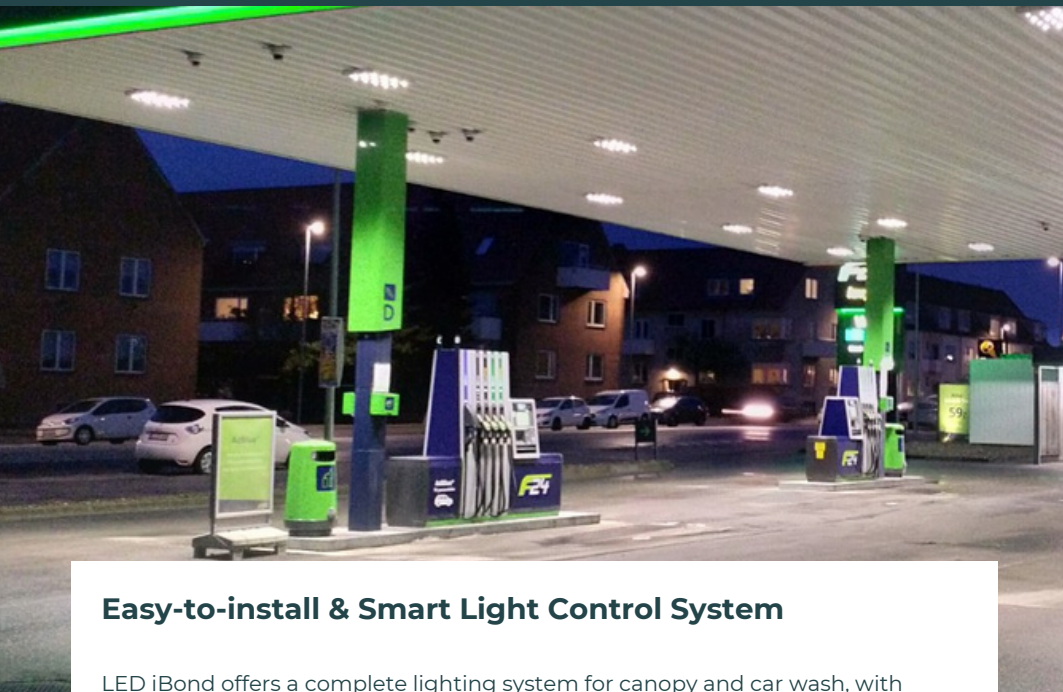


# Retrofit panels with Lighting Control Solution for Canopies and Car Wash



## PRODUCT SHEET

### Easy-to-install & Smart Light Control System

LED iBond offers a complete lighting system for canopy and car wash, with optional smart lighting scenarios with motion and daylight sensors.

#### Customized Light panels for perfect retrofit

The slim 8-11 mm GRACY LED-panels are available in many shapes and sizes for 1:1 retrofit to cover or re-use existing frame.

The light panels are weather, water and dust resistant. The aluminum panels and glass-protected LEDs are designed for rough environments where light, safety and durability are essential.

Market leading product lifespan. High quality solution which is designed and manufactured in Denmark.

#### Easy installation with Master box

LED iBond's light panel system is a self contained plug and play solution. The solution is build on one or more easy-to-install Master boxes with control electronics connecting all components to one single solution.


#### Optimizing energy efficiency

Smart sensors and the light control system can help you increase energy savings and extend the life of your lighting installation. This can also reduce maintenance costs and the overall CO2-emissions.

#### Fields of application:

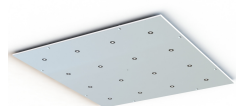
Service Station Canopies and Car Washes.

## Key Features

- Retrofit - matches any service station or car wash design
- Easy-to-install Master box
- Smart Motion sensors
  - IR or Microwave
  - Built-in or external
- Strong light of up to 15.000 Lumen and up to 6500K
- IP67 rated with sealed glass front for maximum protection
- Resistant against high-pressure cleaning
- Standard sizes:
  - 560×360x6 mm
  - 560×260x6 mm
  - 600x600x6 mm
- Recyclable materials 

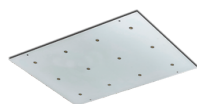
# Product specifications

## GRACY Industry light panels



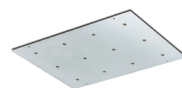
**SQR 600x600-16**

51571-M02



**RGS LL 560x360-12**

51272.10



**RGS GL 560x260-12**

51246.11

Field of application	Canopy		Car Wash
Dimensions	600 x 600 x 6 mm	560 x 360 x 6 mm	560 x 260 x 11 mm
Power consumption - incl. driver	38 W	40 W	
Luminous flux	6100 lm	5900 lm	
Efficacy	160 lm/W	148 lm/W	
Supply Voltage	100-240VAC		
Color temperature	5700 K	4000 K	
Color Rendering Index (CRI)	+70		
No. of LED	16	12	
Light Control	Yes		
Ingress Protection	IP67	IP65	IP67 Chemical Resistant
Front protection	Glass on LED	Laminate	Glass Encapsulated Panel
Weight (panel)	3,2 kg	2,0 kg	2,9 kg

### Easy installation and Light Management ready

The GRACY LED-panel are easily mounted directly onto the canopy or car wash ceiling. There are no need for mounting plates or cutting roofholes.

Smart sensors and light control system is an optional feature. Programming of individual sensor-controlled lights is possible onsite with a remote control.

The light panels has IP67 glass protected LEDs ensuring water and weather resistance. The panels for car wash are glass encapsulated to resist harsh chemicals and high pressure cleaning. All cables are UV- and water resistant.

## Connection & Components

