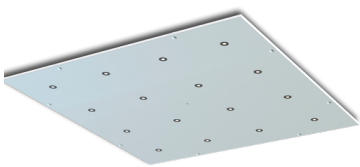


The ultimate LED luminaire GRACY™ Industry

PRODUCT SHEET

Minimalistic with high efficiency



One Component Solution
GRACY™ Industry integrates high-quality LED and wiring into one single aluminum component fixture with IP67-classification.



Slimline design
With only 6 mm, GRACY™ is the world's thinnest LED-spot fixture for industrial use.



Easy to place everywhere
The only 13,6 mm thick power connection on the back side of GRACY™ luminaire makes it easy to place and mount everywhere.

Key Features

24VDC

148
Lumen/Watt

IP67

Max
11.820
Lumen

BEAM
ANGLE



5700K

DIMMABLE

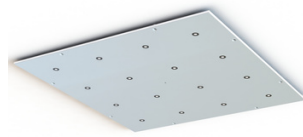


LIFESPAN
>50.000h



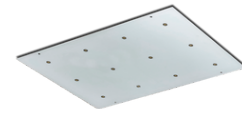
Product specifications

GRACY™ Industry light panels



SQR 600x600-16

51601.21



RGS 560x260-12

51601.11

| | | |
|----------------------------------|------------------|--------------------------|
| Dimensions | 600 x 600 x 6 mm | 560 x 260 x 11 mm |
| Power consumption - incl. driver | 38 W | 40 W |
| Luminous flux | 6100 lm | 5900 lm |
| Efficacy | 160 lm/W | 148 lm/W |
| Supply Voltage | 110-240VAC | 110-240VAC |
| Color temperature | 5700 K | 5700 K |
| Color Rendering Index (CRI) | +70 | +70 |
| No. of LED | 16 | 12 |
| Light Control | Yes | Yes |
| Ingress Protection | IP67 | IP67 Chemical Resistant |
| Front protection | Glass on LED | Glass Encapsulated Panel |
| Weight (panel) | 3,2 kg | 2,9 kg |

Easy Installation for New and Retrofit Projects

The GRACY™ LED-panel offer a market-leading product lifespan designed for harsh environments where light, safety, and durability are key performance drivers.

The light panel is easily mounted directly onto the surface with no need for mounting plates or cutting roofholes.

The solution has many industrial applications like production facilities, parking garages, service station canopies, car washes or elevators cielings.

All light panels are IP67-rated and the cables are UV- and water resistant. The SQR-panels has glass protected LED's ensuring water and weather resistance. The RGS-panels are glass encapsulated and sealed to resist harsh chemicals and high pressure cleaning.

Applications

The GRACY™ LED-panels are versatile and can be used as the primary light source for many different application areas.

SQR 600x600-16

| Application | Area (m ²) | Required Lux level | Est. no. of Luminaires |
|------------------------|------------------------|--------------------|------------------------|
| Service Station Canopy | 150 | 400 | 10 |
| Precision work | 200 | 500 | 17 |
| Production/Garages | 1500 | 200 | 50 |

Mounting height: 2,5m

RGS560x260-12

| Application | Area (m ²) | Required Lux level | Est. no. of Luminaires |
|--------------------|------------------------|--------------------|------------------------|
| Car wash | 50 | 700 | 6 |
| Precision work | 100 | 500 | 9 |
| Production/Garages | 1500 | 200 | 51 |

Mounting height: 2,5m

