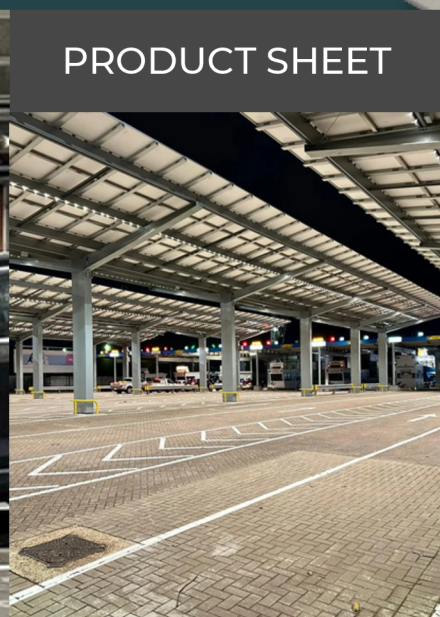


●●●●● Lighting Solution
for Industrial Applications

TRACY® Interconnect

TRACY® 900-2 (10-pack)



PRODUCT SHEET

Easy installation and Flexible Danish design

TRACY® Interconnect LED panel

The aluminum panels and glass-protected LEDs (IP67) are designed for rough environments where light, safety and durability are essential.

LED iBond's lighting panel system is a plug and play solution, that reduce wiring. Interconnect light panels with up to 100 spots or 35000 lumen on one single power connection making it perfect for large areas.

Danish Design

The minimalistic design integrates completely into the building's construction and gives great freedom in solution design before and after installation.

High quality solution designed and manufactured in Denmark.
Market leading product lifespan.

Optimizing Energy Efficiency

Smart sensors and light control systems can help you increase energy savings and extend the life of your lighting installation. This can also reduce maintenance costs and the overall CO2-emissions.

Key Features

Simple installation

Powerful self-contained plug-and-play solution that can be easily installed

Energy savings

Lighting control systems can reduce energy consumption by up to 80% and reduce climate impact

Increased safety

Providing the desired amount of light where and when it is needed increase safety

Upgradability

The systems are upgradeable and can be customized to meet the specific requirements of a building or space

Recyclable materials 

LED iBOND

Product specifications

TRACY® Interconnect LED light panel

TRACY® Panel standard

TRACY® Light Panel	Dimensions (H x W x L)	6 x 40 x 900 mm
	Weight (panel)	0,45 kg
	No. of LED's	2 LED
LED	Power Consumption <i>per LED</i>	1,7-4 W
	Luminous flux <i>per LED</i>	250-590 lm
	Efficacy	148 lm/W
	Color temperature	3000 K or 4000 K
	Color Rendering Index (CRI)	70+
	Light Control	Yes
	Ingress Protection	IP67
Driver	Wattage	10 - 320 W
	Supply Voltage	100 - 240 VAC
Max. per power connection	No. of LED's	100 LED
	Amperes	10 amp
	Lumen	35000 lm



Delivery Information (10-Pack)

Unit description	10-Pack	TRACY® 900-2 (10-pack) (including 1x 1m Power Cable, 2x Connector Sockets, 22x Connector pins, 22x Mounting Brackets, 1x Allen Key, Quick Guide). Total: 9 meters of interconnectable LED spot panels with 18 LED spots. Power Supply Unit is NOT included!
LED iBond Item no.	10-Pack	51601.01
Carton size (L xWxH)	10-Pack	1147 x 90 x 39mm
Carton Gross Weight	10-Pack	4,8 kg

TRACY® 900-2 (10-pack)

LED iBOND

LED panel color

Total: light panel length: 9 m. 5920 lumen at 40 Watt
Distance between LED's: 450 mm

Panel specifications:

24VDC
3,4 - 8 Watt
148 Lumen/Watt

DALI
IP67

SIZE 900x40x6

☐ 4000K Product no.: 51601.01
☐ 3000K Product no.: 51601.02

In this package:
TRACY® 900-2 (10-pack)

10 x TRACY® light panel
20+2 x Mounting Bracket
20+2 x Connector Pin
2 x Connector Socket
1 x Power Cable 1 m
1 x Allen Key

50,000h
IP67